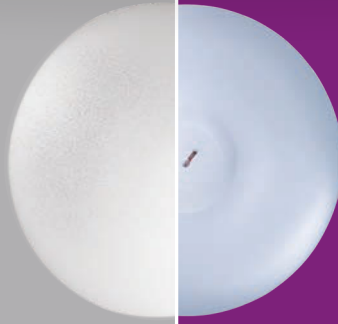




A closer look at Motiva Implants[®]: 6th GENERATION¹ NANOSURFACE TECHNOLOGY

1980s



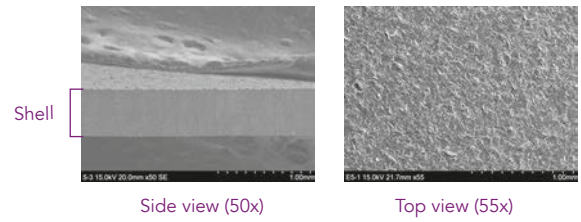
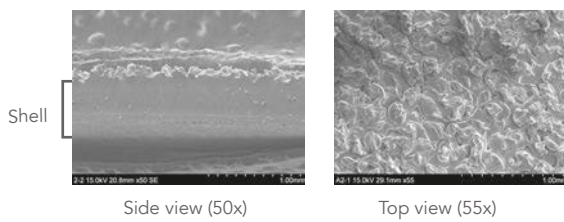
TODAY

MICROTEXTURE
SILTEX[®]

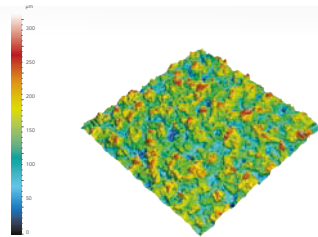
VS

ADVANCED SMOOTH
SMOOTHSILK[®]/SILKSURFACE[®]

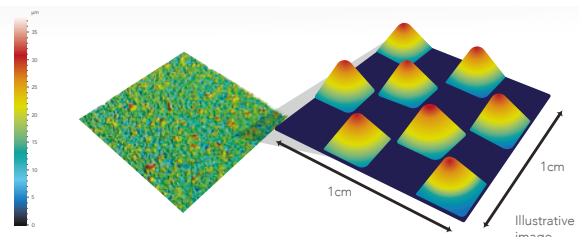
Scanning Electron
Microscopy (SEM)



3D Representation



Gross nodular texture with irregular areas between nodules.² Nodule size ranges from 40–100 µm in height and 70–150 µm in diameter³



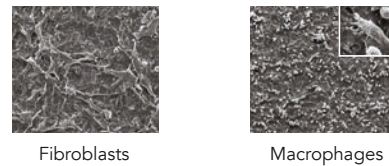
- Thousands of contact points per cm²
- Higher peaks than valleys

Cellular Interaction

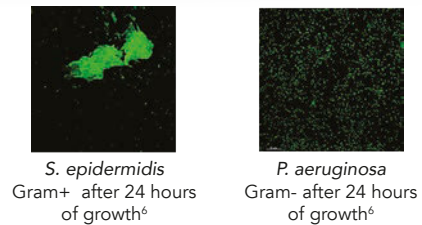
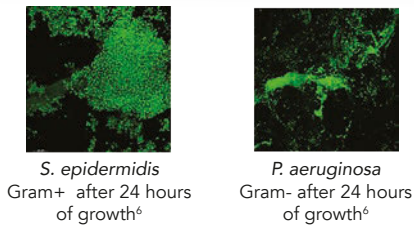
Increases fibroblast planar alignment, and contracture²



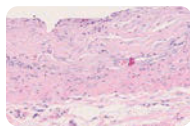
Promotes fibroblast attachment and a lower expression of molecules associated to the inflammatory response^{4,5}



Bacterial Adhesion &
Biofilm Formation

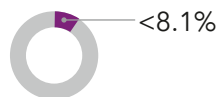


Fibrotic Encapsulation

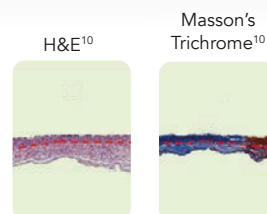


Collagen fibers are linearly organized with no significant difference in histology compared to that associated with traditional smooth implants^{7,8}

3-year Kaplan-Meier Risk of Capsular Contracture with Mentor Siltex⁹

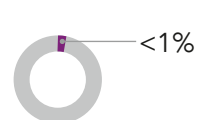


No distinction between surfaces was made in Mentor's core study



Capsule morphology is mostly flat and thin.

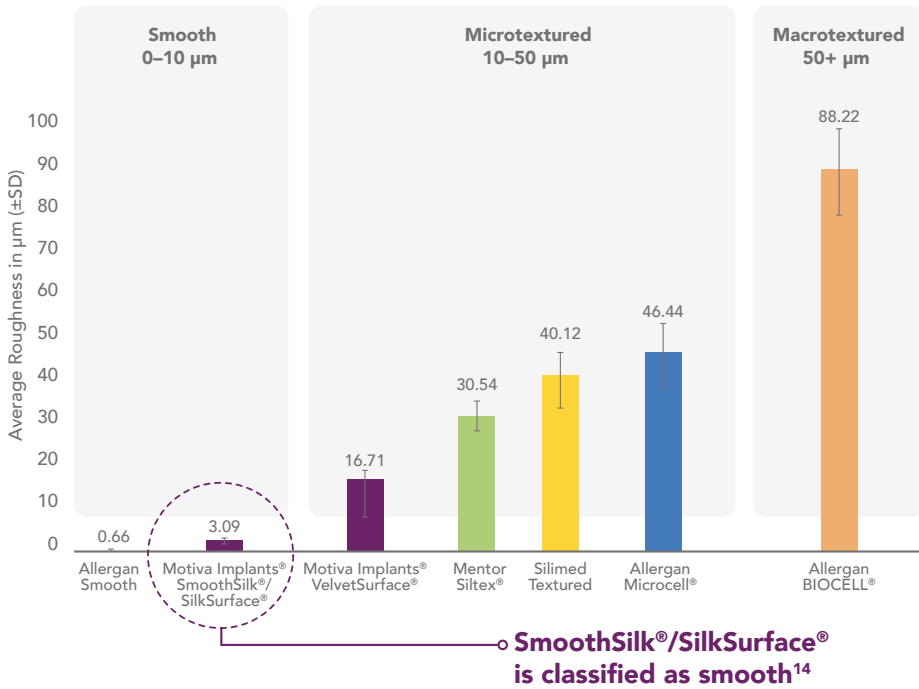
3-year Kaplan-Meier Risk of Capsular Contracture with Motiva^{®11}



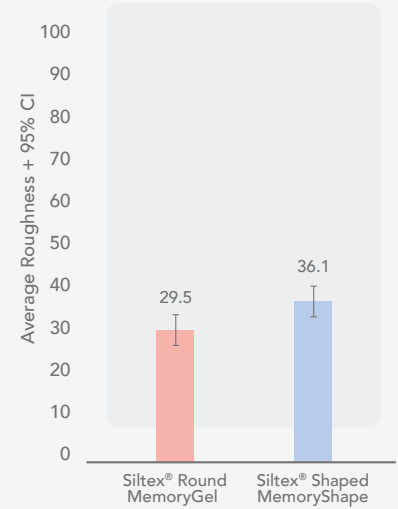
SEM images of fibroblasts (obtained from breast tissue) and macrophages (from THP-1 monocytes cell line, ATCC) growing on different silicone surfaces. SEM & 3D representation images courtesy of Establishment Labs. Fibroblast & macrophage images courtesy of Prof. Ardeshir Bayat and the University of Manchester. Siltex[®] histology reprinted from Journal of the Mechanical Behavior of Biomedical Materials, 2018.¹²

Breast Implant Classification Based on Surface Type

International Organization for Standardization (ISO-14607:2018)¹³



Siltex® has different surface roughness values for its round and anatomic implants¹⁵



Bar graph created based on Siltex® average surface roughness with 95% CI data from Wixtrom et al (Table 1)¹⁵

MOST COMPREHENSIVE ADVANCED SMOOTH IMPLANT PORTFOLIO



FIRST-OF-ITS-KIND SAFETY FEATURES



Q Inside® Safety Technology



BluSeal®



TrueMonobloc®

Please check regulations for locally approved products.

References

- Sforza M, Hammond DC, Botti G et al. Expert Consensus on the Use of a New Bioengineered, Cell-Friendly, Smooth Surface Breast Implant. *Aesth Surg J.* 2019 May, 39(3):S95-S102.
- Barr S, Hill EW, Bayat A. Current implant surface technology: an examination of their nanostructure and their influence on fibroblast alignment and biocompatibility. *Eplasty.* 2009 Jun 16;9:e22.
- Danino AM, Basmacioglu P, Saito S, et al. Comparison of the capsular response to the Biozell RTV and Mentor 1600 Siltex breast implant surface texturing: A scanning electron microscopic study. *Plast Reconstr Surg.* 2001;108:2047–2052.
- Barr S, Hill EW, Bayat A. Functional biocompatibility testing of silicone breast implants and a novel classification system based on surface roughness. *J Mech Behav Biomed Mater.* Nov 2017; 75:75-81.
- Cappellano G, Ploner C, Lobenstein S, Sopper S, Hoertnagl P, Mayerl C, et al. Immunophenotypic characterization of human T cells after in vitro exposure to different silicone breast implant surfaces. *PLoS ONE* 2018;13(2):e0192108.
- James GA, Boegli L, Hancock J, Bowersock L, Parker A, Kinney BM. Bacterial Adhesion and Biofilm Formation on Textured Breast Implant Shell Materials. *Aesth Plast Surg.* 2019 Apr;43:490–497.
- Poepl N, Schreml S, Lichtenegger F et al. Does the Surface Structure of Implants Have an Impact on the Formation of a Capsular Contracture? *Aesth. Plast. Surg.* 31:133_139, 2007.
- Abramo AC, Ribeiro De Oliveira V, Ledo-Silva MC, De Oliveira EL. How Texture-Inducing Contraction Vectors Affect the Fibrous Capsule Shrinkage Around Breasts Implants? *Aesth. Plast. Surg.* 2010; 34:555–560.
- Cunningham B. The Mentor Core Study on Silicone MemoryGel Breast Implants. *Plast. Reconstr. Surg.* 2007;120(Suppl1):19S-29S.
- Doloff J. Overcoming host rejection response to improve breast implant biocompatibility. 15 Sep 2017. 3rd World Symposium on Ergonomic Implants, Lago di Garda.
- Sforza M, Zaccacheddu R, Alleruzzo A et al. Preliminary 3-year evaluation of experience with SilkSurface and VelvetSurface Motiva silicone breast implants: a single-center experience with 5813 consecutive breast augmentation cases. *Aesthet Surg J.* 2018; 38(Suppl 2):S62-S73.
- Atlan M, Nuti G, Wang H, Decker S, Perry TA. Breast implant surface texture impacts host tissue response. *Journal of the Mechanical Behavior of Biomedical Materials.* Dec 2018; 88:377-385.
- ISO 14607:2018. Non-active surgical implants – Mammary implants particular requirements. Geneva, Switzerland: International Organization
- Establishment Labs data generated internally per ISO-14607:2018. Surface Characterization Report of different breast implants available in the market. TS-001019 Rev. 1, June 2019.
- Wixtrom R. et al. Device-Specific Findings of Imprinted-Texture Breast Implants: Characteristics, Risks, and Benefits. *ASJ* 2019