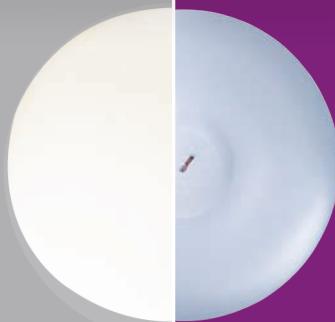


A closer look at Motiva Implants[®]: 6th GENERATION¹ NANOSURFACE TECHNOLOGY



1970s



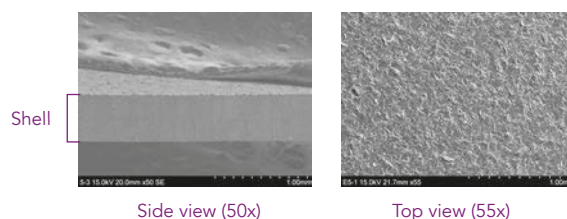
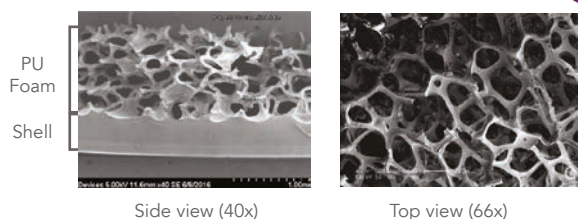
TODAY

POLYURETHANE
(PU)

VS

ADVANCED SMOOTH
SMOOTHSILK[®]/SILKSURFACE[®]

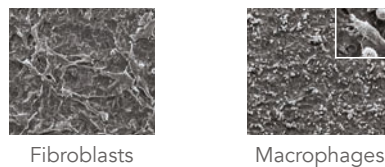
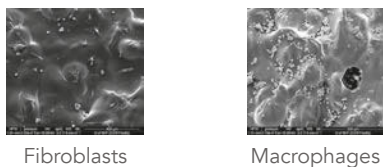
Scanning Electron
Microscopy (SEM)



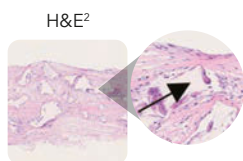
Cellular Interaction

May promote uneven fibroblast attachment and aggregation and granulomatous tissue reaction²

May optimize fibroblast attachment and promote a lower expression of molecules associated to the inflammatory response^{3,4}

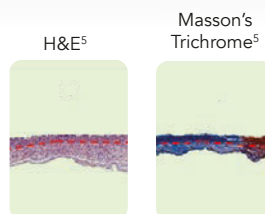


Fibrotic Encapsulation



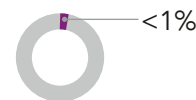
The arrow shows fragmented texture material and the foreign body reaction

Increased foreign body reaction in the PU implant-induced capsules and similar fibrotic pattern than with non-PU textured implants.²

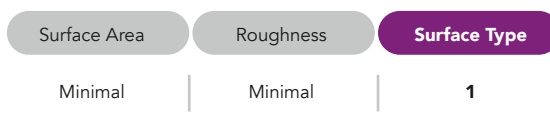
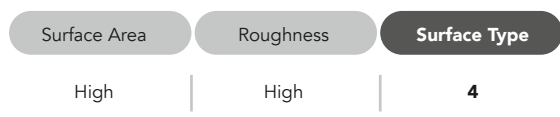


Capsule morphology is mostly flat and thin.

3-year Kaplan-Meier Risk of Capsular Contracture with Motiva^{®6}



Bacterial Growth and Attachment⁷

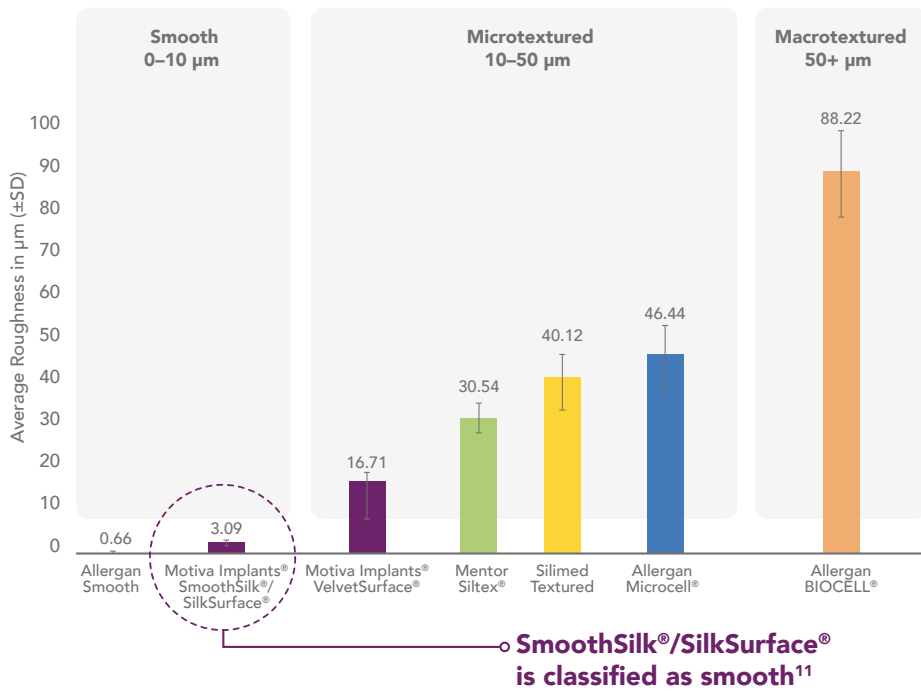


According to Jones/Deva et al. 2018 Grading⁷, the correlation of surface area/roughness with propensity for bacterial growth shows a significant difference in 24-hour attachment and growth of several bacteria between these two surfaces.

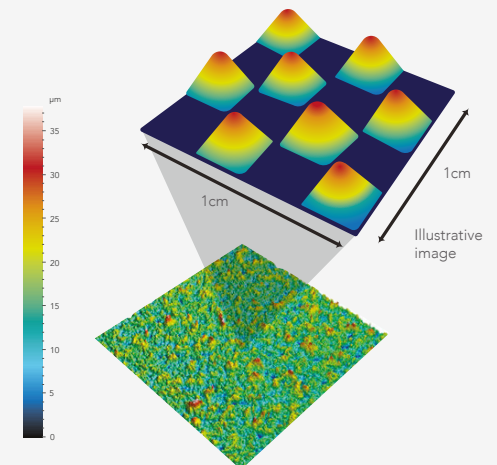
SEM images of fibroblasts (obtained from breast tissue) and macrophages (from THP-1 monocytes cell line, ATCC) growing on different silicone surfaces. SEM & 3D representation images courtesy of Establishment Labs. Fibroblast & macrophage images courtesy of Bayat A. University of Manchester. Polyurethane SEM images and histology reprinted from Journal of the Mechanical Behavior of Biomedical Materials, 2018⁸ and Eplasty, 2009.⁹

Breast Implant Classification Based on Surface Type

International Organization for Standardization (ISO-14607:2018)¹⁰



SmoothSilk®/SilkSurface® 3D representation



- Thousands of contact points per cm²
- High peaks and short valleys

MOST COMPREHENSIVE ADVANCED SMOOTH IMPLANT PORTFOLIO



FIRST-OF-ITS-KIND SAFETY FEATURES



Q Inside® Safety Technology



BluSeal®



TrueMonobloc®

Please check regulations for locally approved products.

References

1. Sforza M, Hammond DC, Botti G et al. Expert Consensus on the Use of a New Bioengineered, Cell-Friendly, Smooth Surface Breast Implant. *Aesth Surg J.* 2019 May, 39(3):S95-S102.
2. Bassetto F, Scarpa C, Caccialanza E, Montesco MC, Magnani P. Histological Features of Periprosthetic Mammary Capsules: Silicone vs. Polyurethane. *Aesth Plast Surg.* 2010; 34: 481-485.
3. Barr S, Hill EW, Bayat A. Functional biocompatibility testing of silicone breast implants and a novel classification system based on surface roughness. *J Mech Behav Biomed Mater.* Nov 2017; 75:75-81.
4. Cappellano G, Ploner C, Lobenwein S, Sopper S, Hoertnagl P, Mayerl C, et al. Immunophenotypic characterization of human T cells after in vitro exposure to different silicone breast implant surfaces. *PLoS ONE* 2018;13(2):e0192108.
5. Doloff J. Overcoming host rejection response to improve breast implant biocompatibility. 15 Sep 2017. 3rd World Symposium on Ergonomic Implants, Lago di Garda.
6. Stevens WG, Harrington J, Alizadeh K et al. Five-year follow-up data from the U.S. clinical trial for Sientra's U.S. Food and Drug Administration-approved Silimed® brand round and shaped implants with high-strength silicone gel. *Plast Reconstr Surg.* 2012 Nov;130(5):973-81.
7. Jones P, Mempin M, Hu H, et al. The functional influence of breast implant outer shell morphology on bacterial attachment and growth. *Plast Reconstr Surg.* 2018;142(4):837-849.
8. Atlan M, Nuti G, Wang H, Decker S, Perry TA. Breast implant surface texture impacts host tissue response. *Journal of the Mechanical Behavior of Biomedical Materials.* Dec 2018; 88:377-385.
9. Barr S, Hill E, Bayat A. Current Implant Surface Technology: An Examination of Their Nanostructure and Their Influence on Fibroblast Alignment and Biocompatibility. *Eplasty.* 2009;9:198-217.
10. ISO 14607:2018. Non-active surgical implants – Mammary implants particular requirements. Geneva, Switzerland: International Organization
11. Establishment Labs data generated internally per ISO-14607:2018. Surface Characterization Report of different breast implants available in the market. TS-001019 Rev. 1, June 2019.